

MONTHLY MEMBERSHIP PROGRESS REPORT

LOCATION NEW YORK

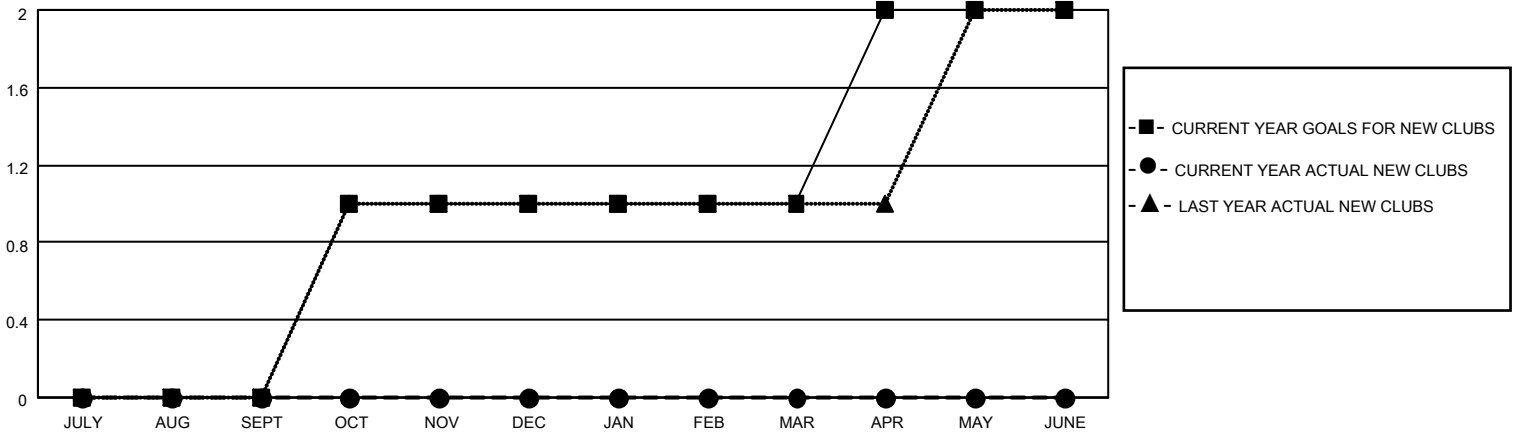
District 20 E1

Results as of: 5/31/2022

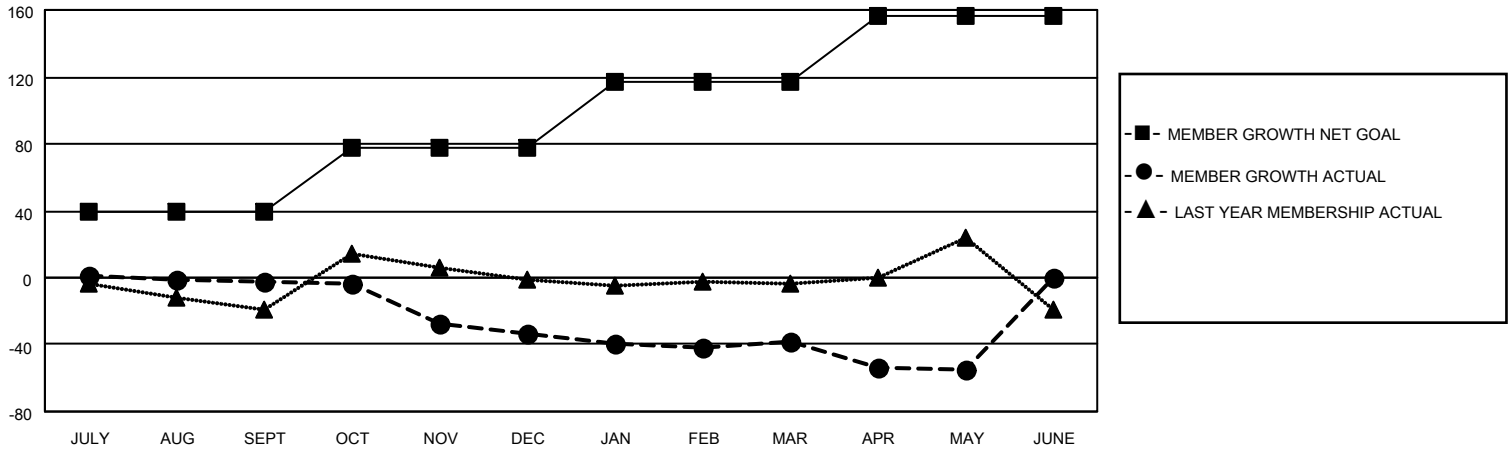
Clubs			
RESULTS FOR 2021-2022			
QUARTER	NEW CLUB GOAL	NEW CLUBS	DROPPED CLUBS
JULY/AUG/SEPT	0	0	1
OCT/NOV/DEC	1	0	1
JAN/FEB/MAR	0	0	0
APR/MAY/JUNE	1	0	1

Members			
RESULTS FOR 2021-2022			
QUARTER	MEMBER GROWTH NET GOAL	MEMBER GROWTH ACTUAL	DROPPED MEMBERS ACTUAL (including transfers)
JULY/AUG/SEPT	39	17	15
OCT/NOV/DEC	39	26	57
JAN/FEB/MAR	39	29	32
APR/MAY/JUNE	39	31	34

GOALS AND ACTUAL NEW CLUBS CUMULATIVE



GOALS AND ACTUAL MEMBERS CUMULATIVE



DROPPED CLUBS: 3

26 CLUBS OF 40 ADDED 1 OR MORE NEW MEMBERS

GENDER DISTRIBUTION

MALE	877 (69.94%)
FEMALE	376 (29.98%)
NON BINARY	0 (0.00%)
PREFER NOT TO ANSWER	1 (0.08%)

DROPPED MEMBERS

[CLICK HERE FOR CUMULATIVE MEMBERSHIP DATA](#)

DECEASED	25
CLUB CANCELLED	31
OTHER	82
TOTAL	138

TOTAL FAMILY UNIT MEMBERS 209

FAMILY MEMBERS PAYING HALF DUES 105